



DOMAINE NATIONAL DE CHAMBORD - LOIR-ET-CHER (41)

CHÂTEAU DE CHAMBORD

Aile François I^{er} et tour Robert de Parme

TRAVAUX PRIORITAIRES DE CONSOLIDATIONS ET DE REPRISES
STRUCTURELLES

AVANT-PROJET-SOMMAIRE (APS)

PLANS EXISTANTS

Maîtrise d'œuvre :



Maël de Quelen
Architecte en Chef des Monuments Historiques-DPLG
Restauration Monuments historiques & demeures privées
27, Passage du Caire - 75002 Paris
Tél. 09 54 80 95 85
maeldequelelen@gmail.com
agence.dequelen.acmh@gmail.com
Siret. 809 306 236 00013 - APE 7111Z

E.C.P. ECP

28 rue Franciade
41000 Blois
Tél : 02 54 74 43 42



ATELIER ERGON
168/170 rue Saint-Denis
75002 Paris
Tél : 09 79 09 79 37

Maîtrise d'ouvrage :



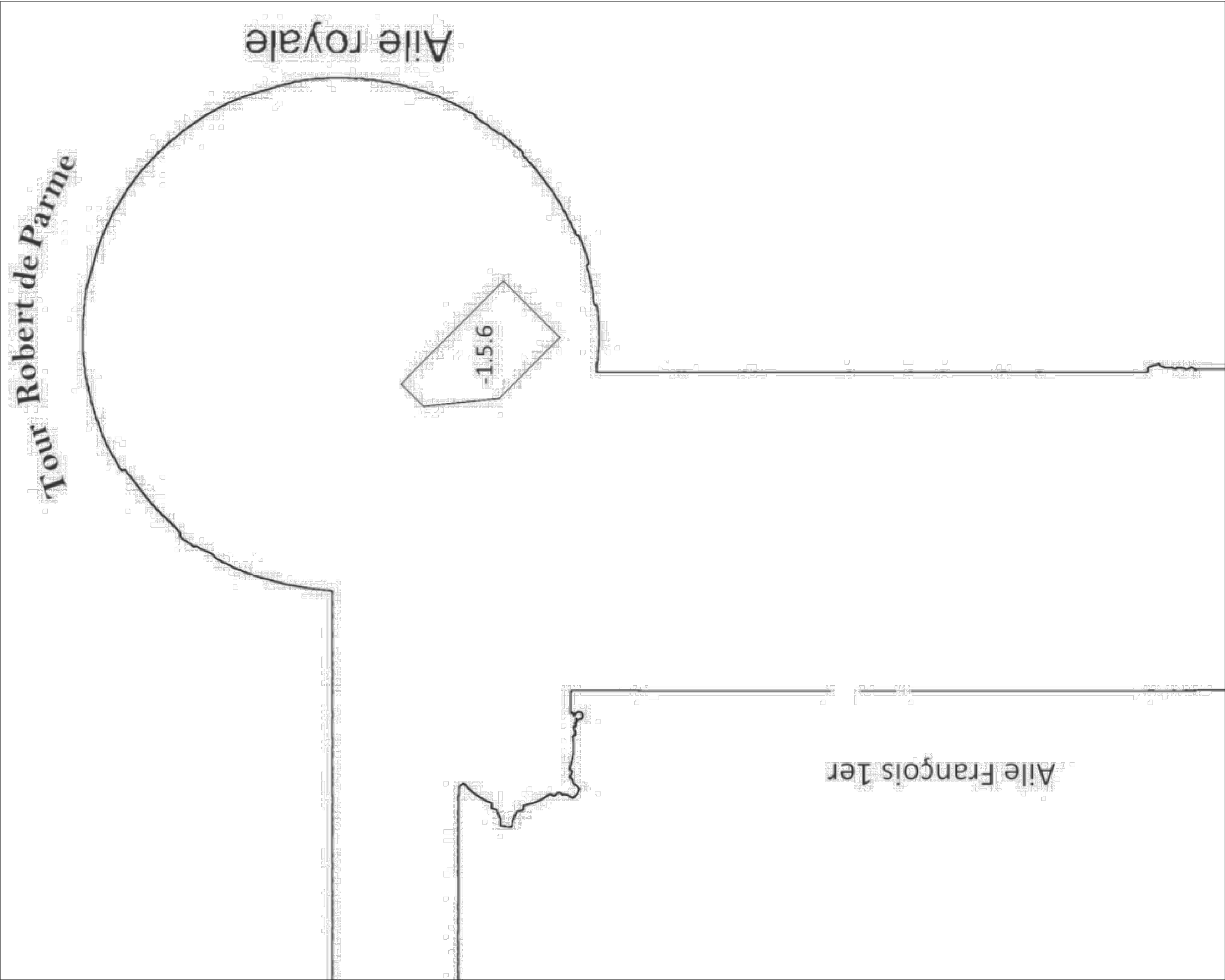
domaine national de Chambord

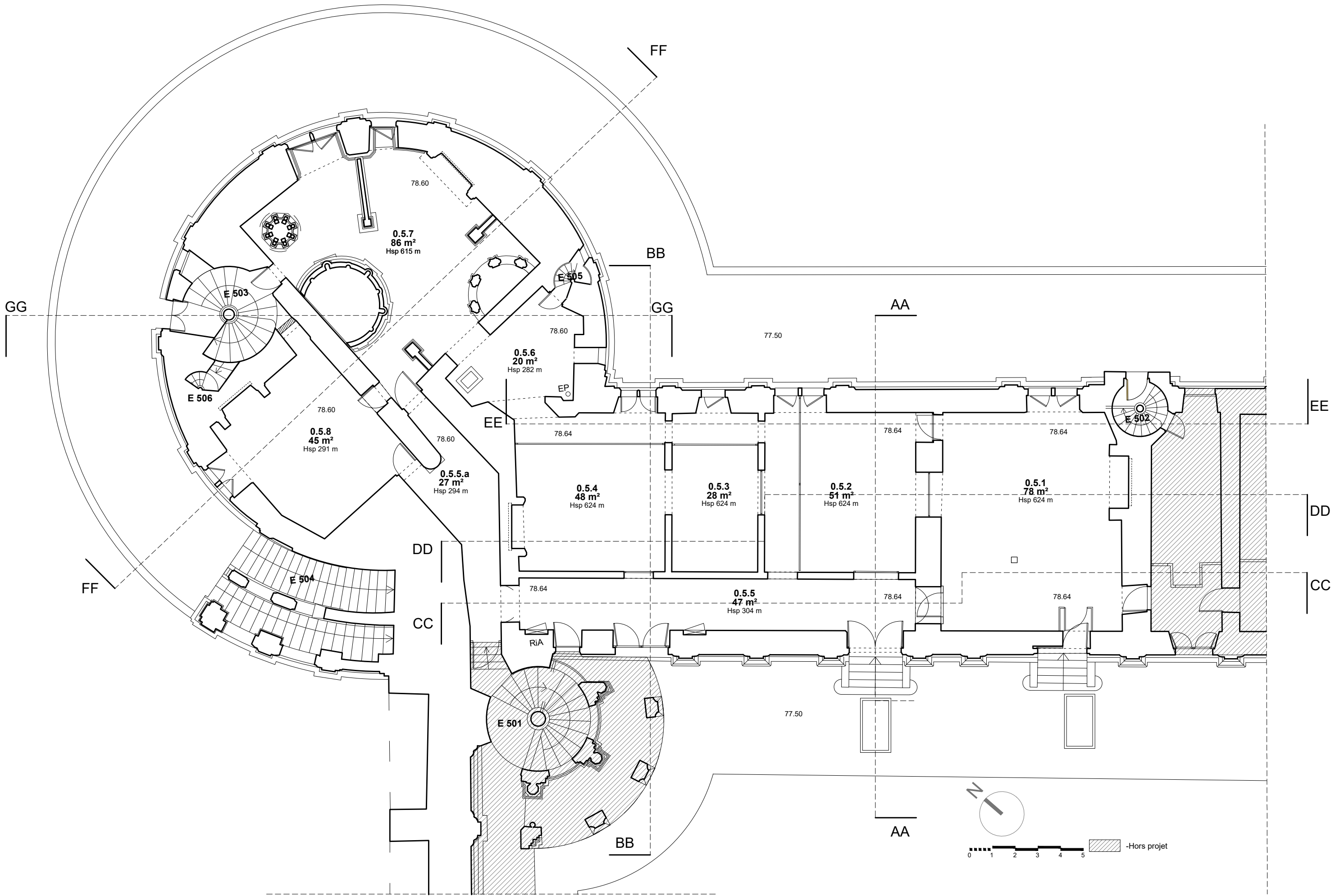
DOMAINE NATIONAL DE CHAMBORD
Direction des bâtiments et des jardins
Château de Chambord
41250 CHAMBORD

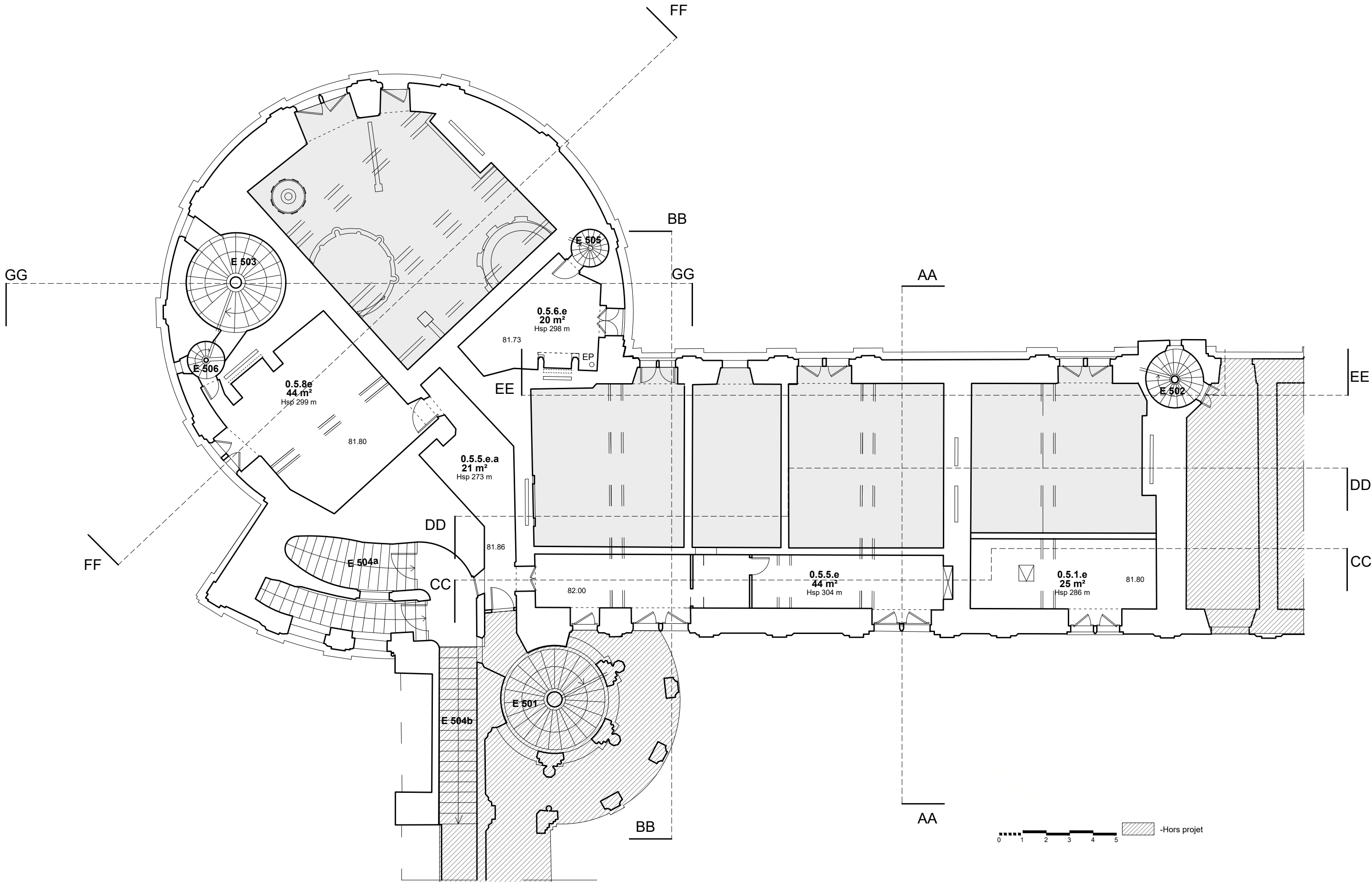
Maîtrise d'ouvrage déléguée :

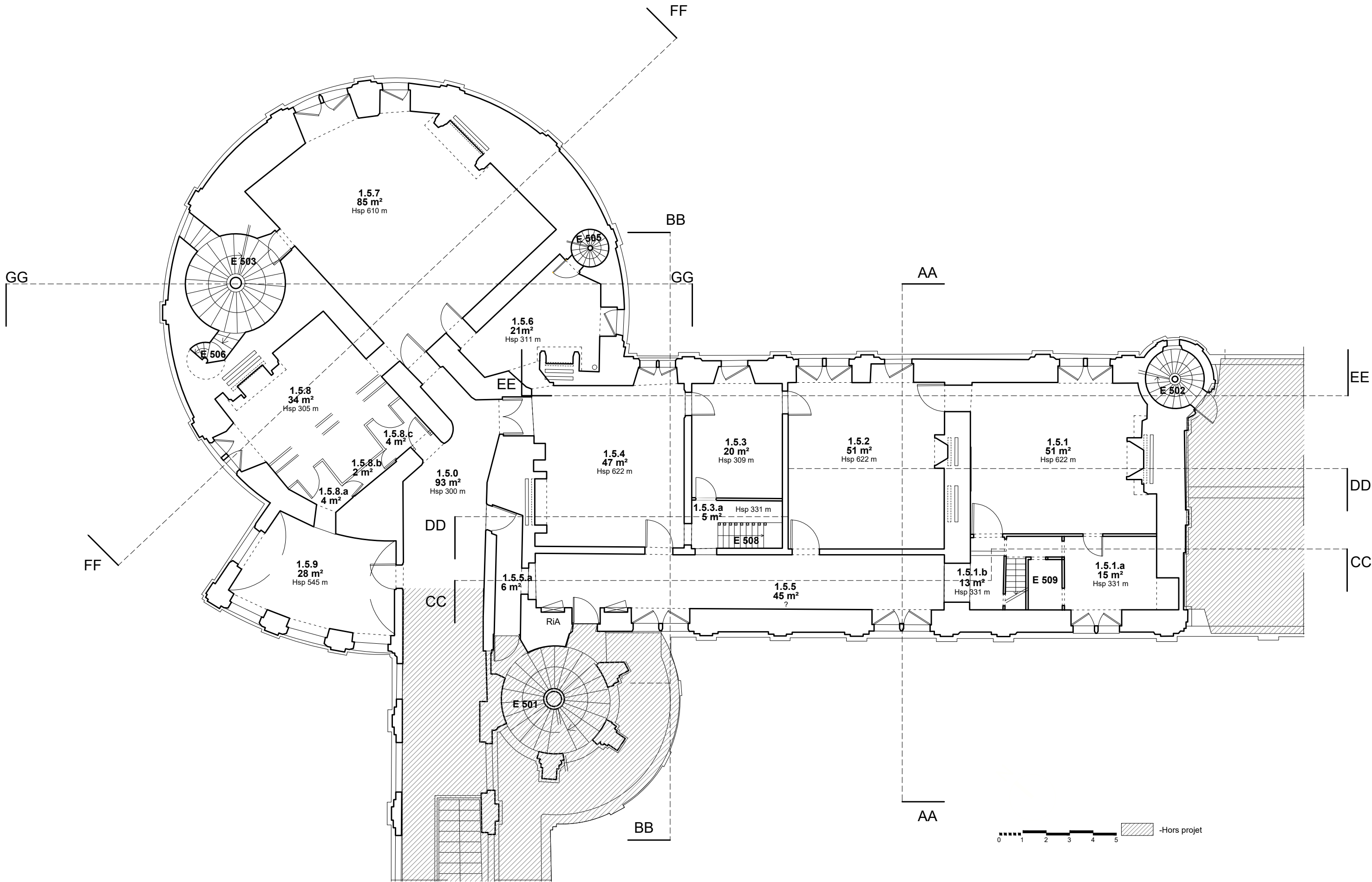


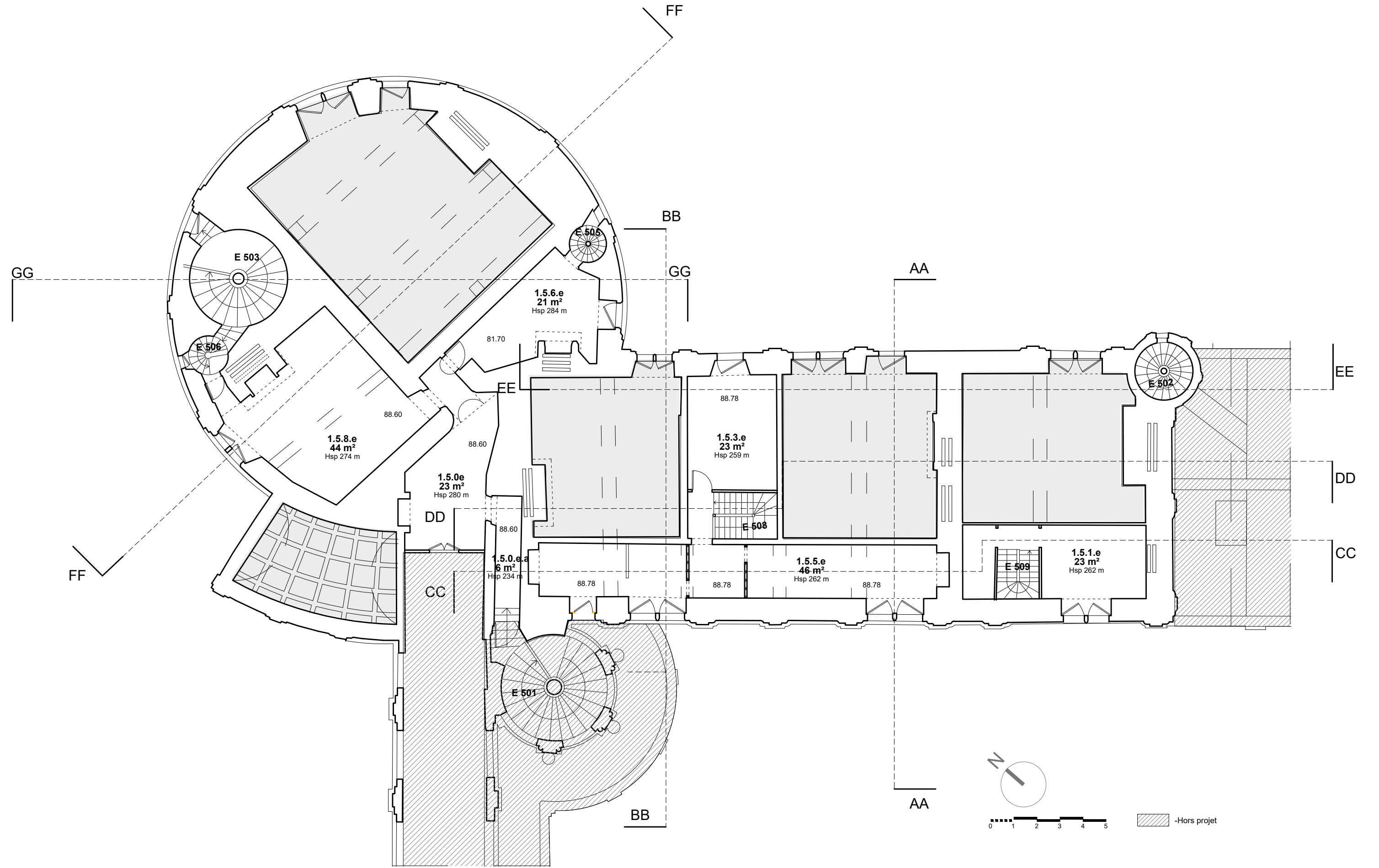
OPPIC
**OPÉRATEUR DU PATRIMOINE ET PRO-
JETS IMMOBILIERS DE LA CULTURE**
30 rue du Château des Rentiers
75647 PARIS cedex 13
Tél : 01 44 97 78 00

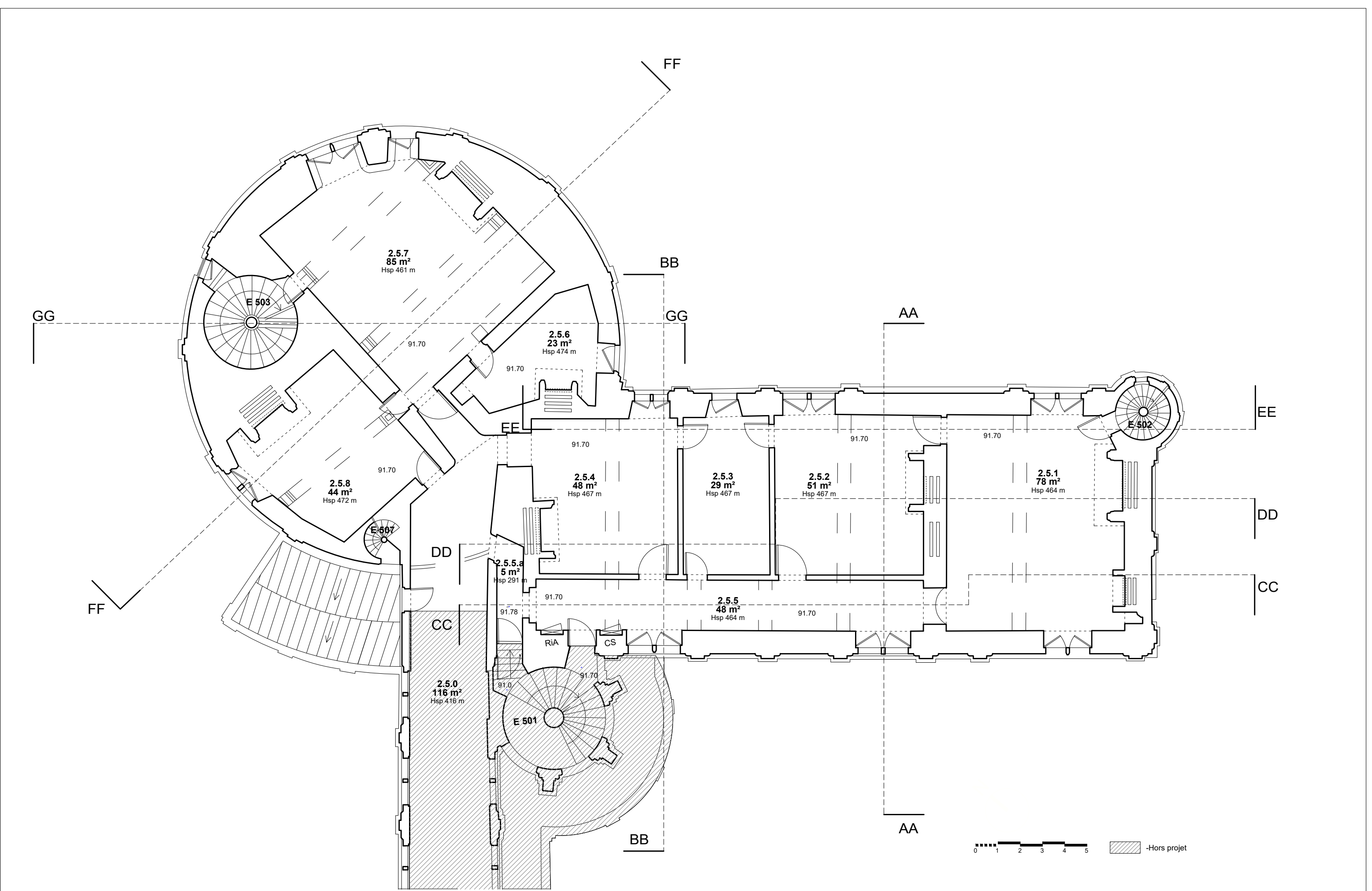


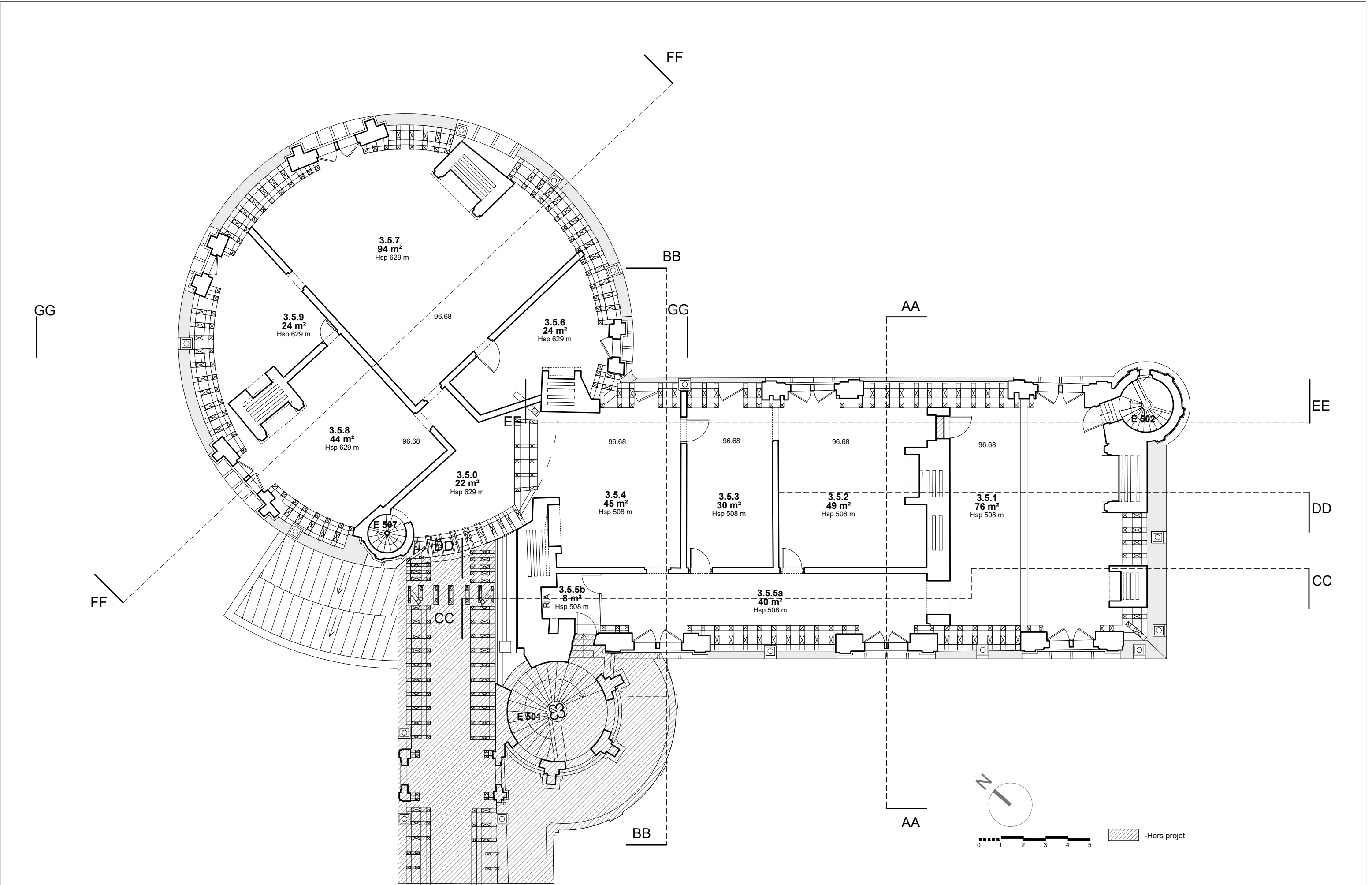


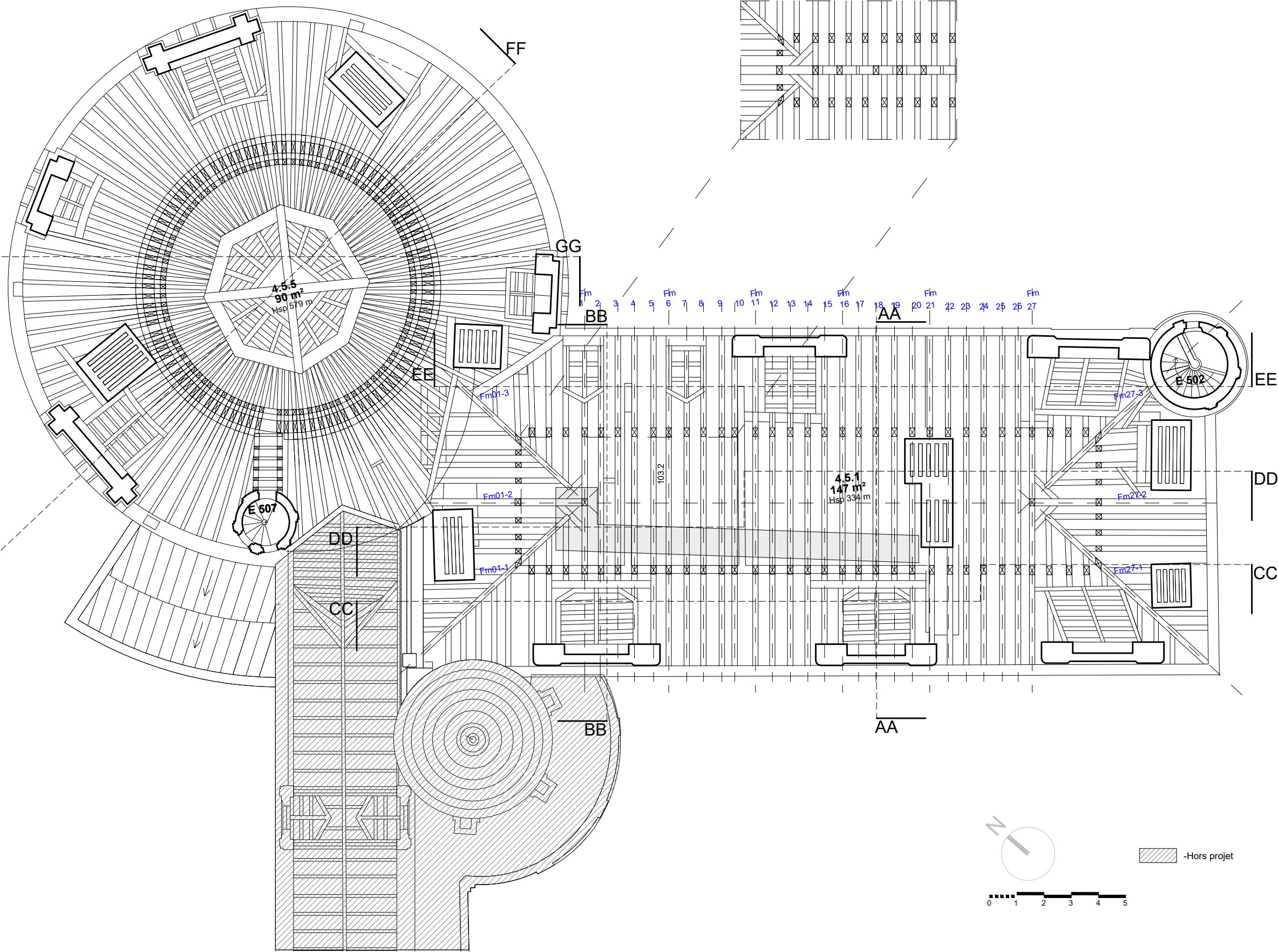


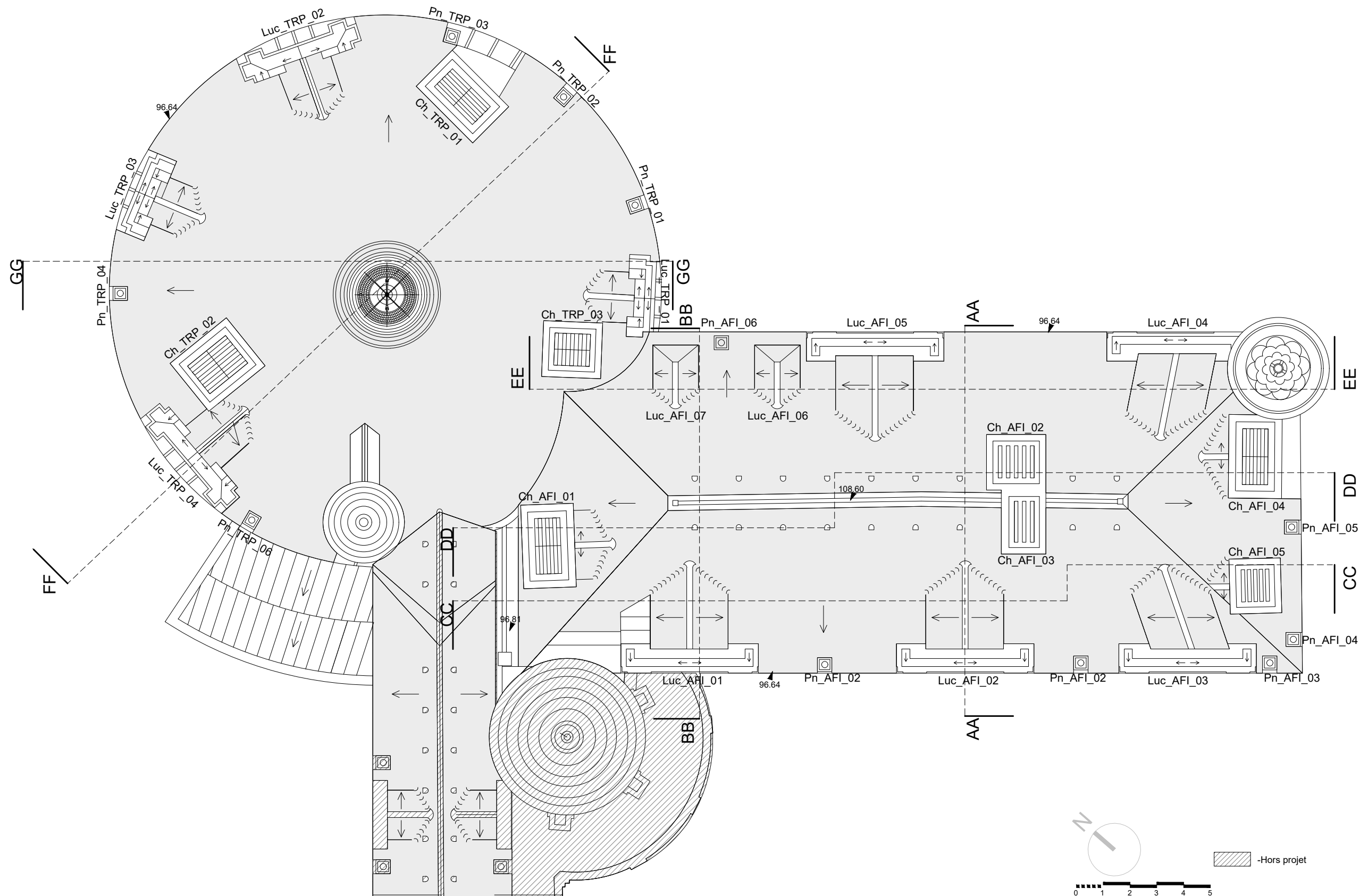












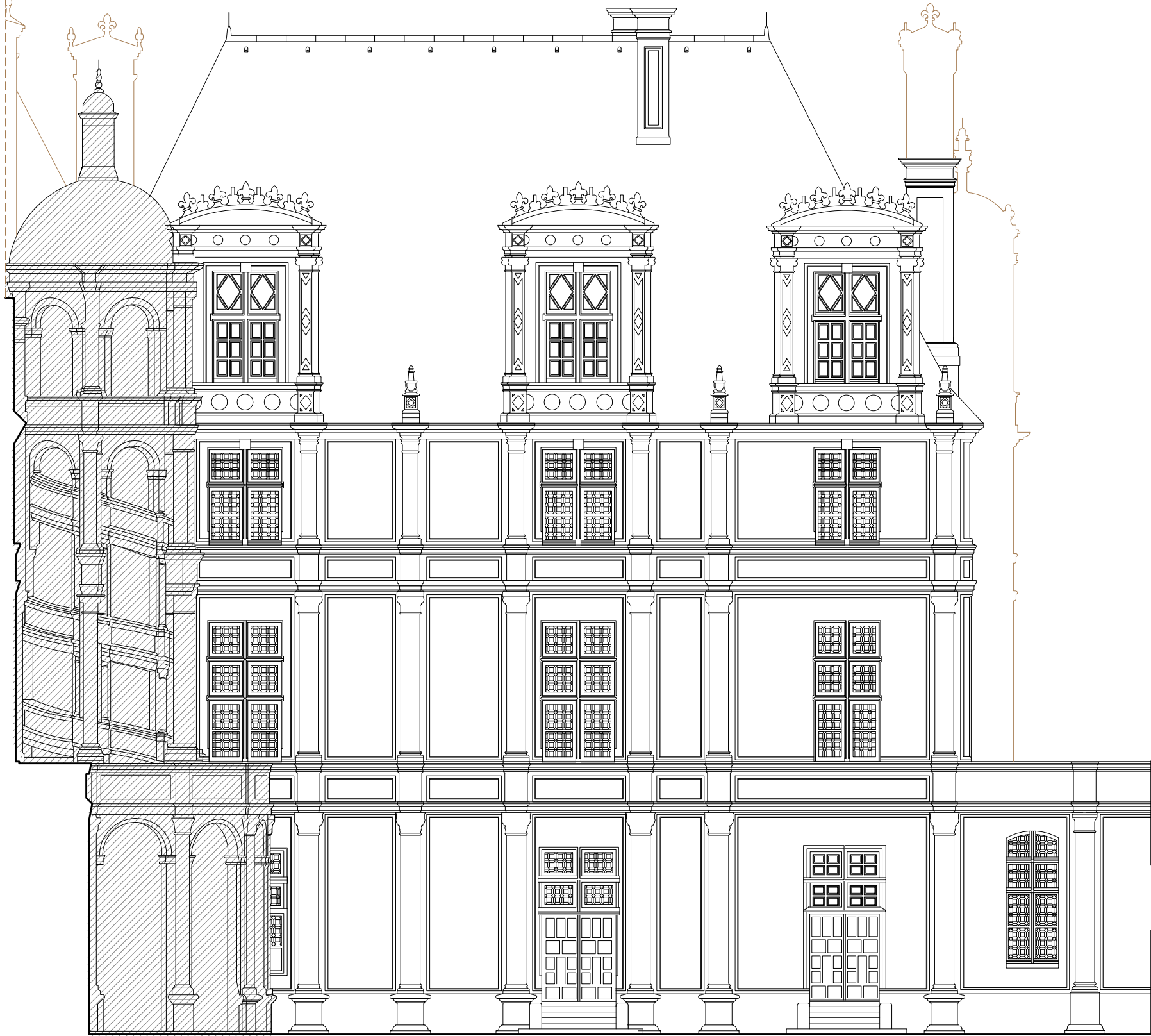
108.55 NVP/NGF
Faitage

96.68 NVP/NGF
N3

91.70 NVP/NGF
N2

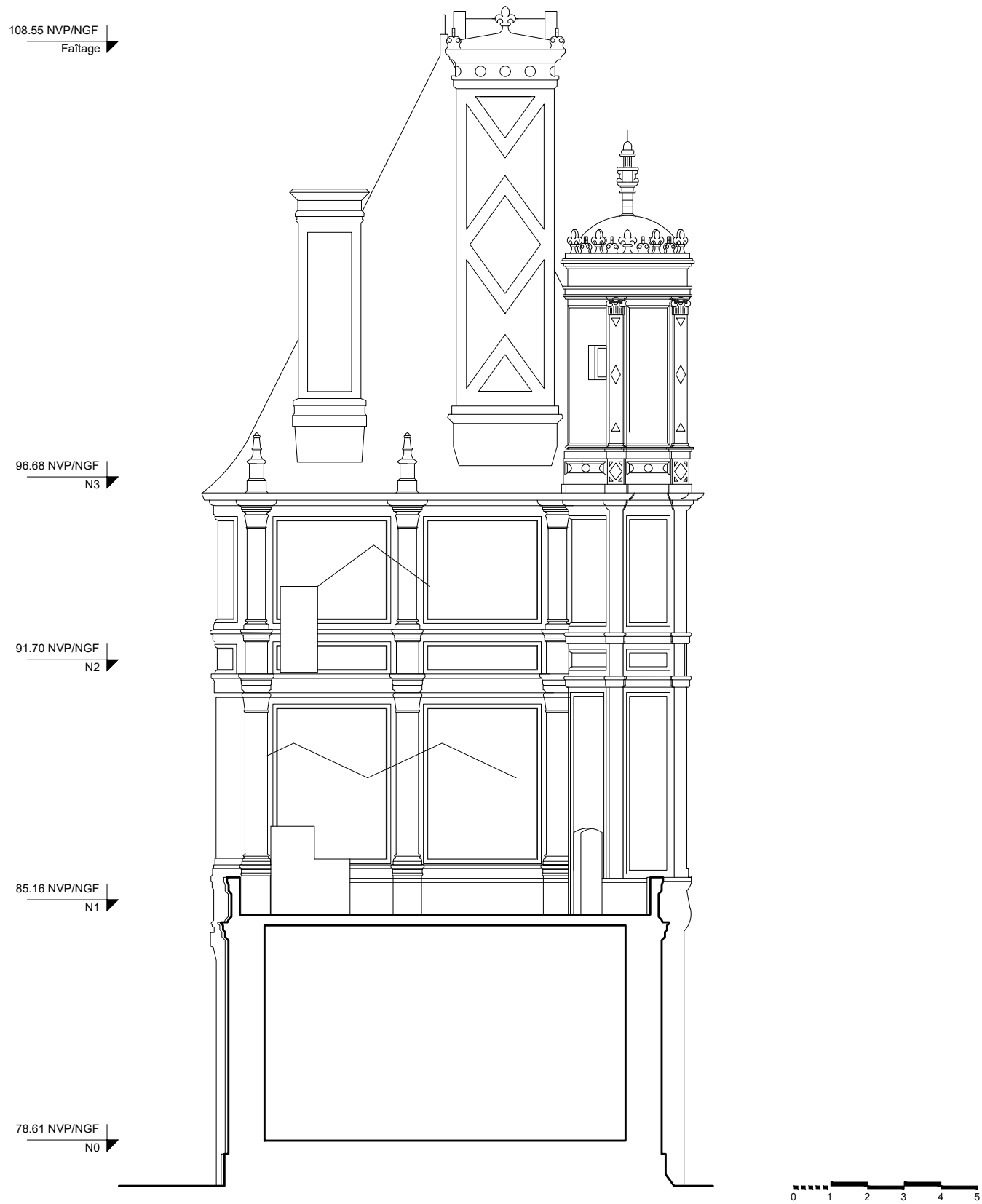
85.16 NVP/NGF
N1

78.61 NVP/NGF
N0



0 1 2 3 4 5





108.55 NVP/NGF
Faitage

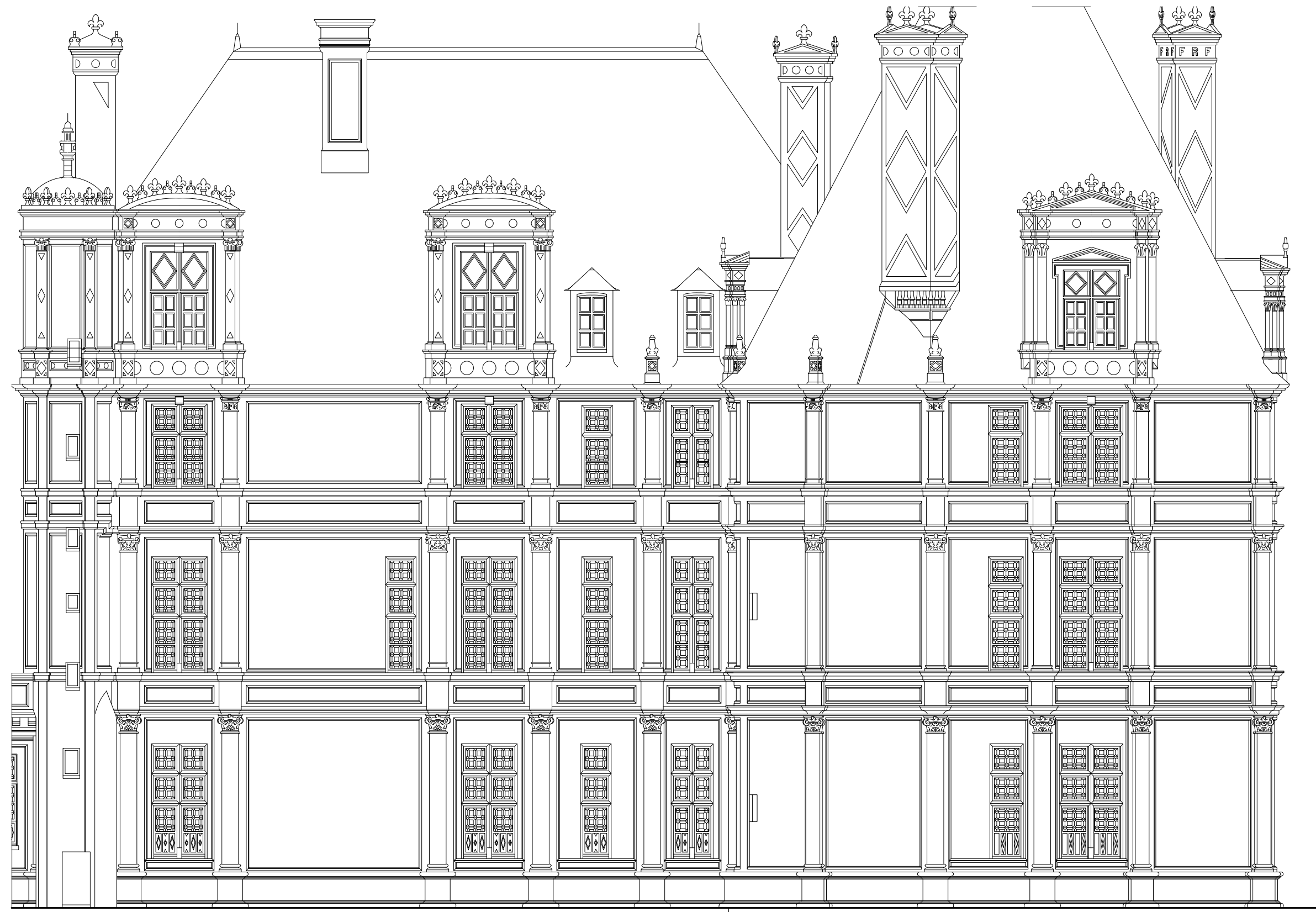
96.68 NVP/NGF
N3

91.70 NVP/NGF
N2

85.16 NVP/NGF
N1

78.61 NVP/NGF
N0

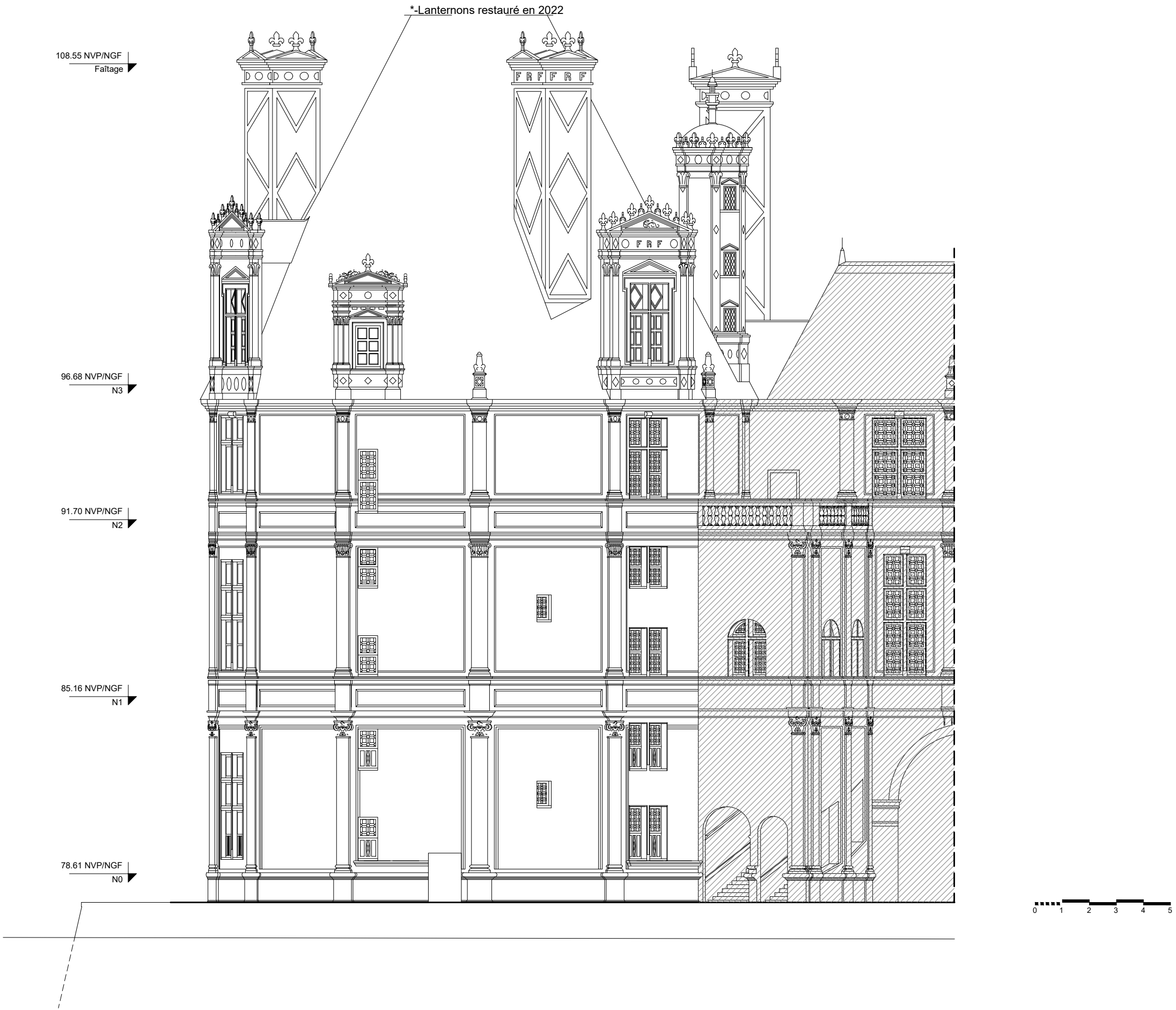
*-Lanternons restauré en 2022

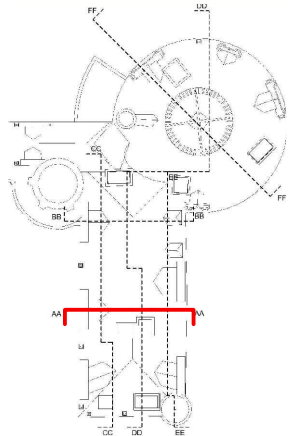
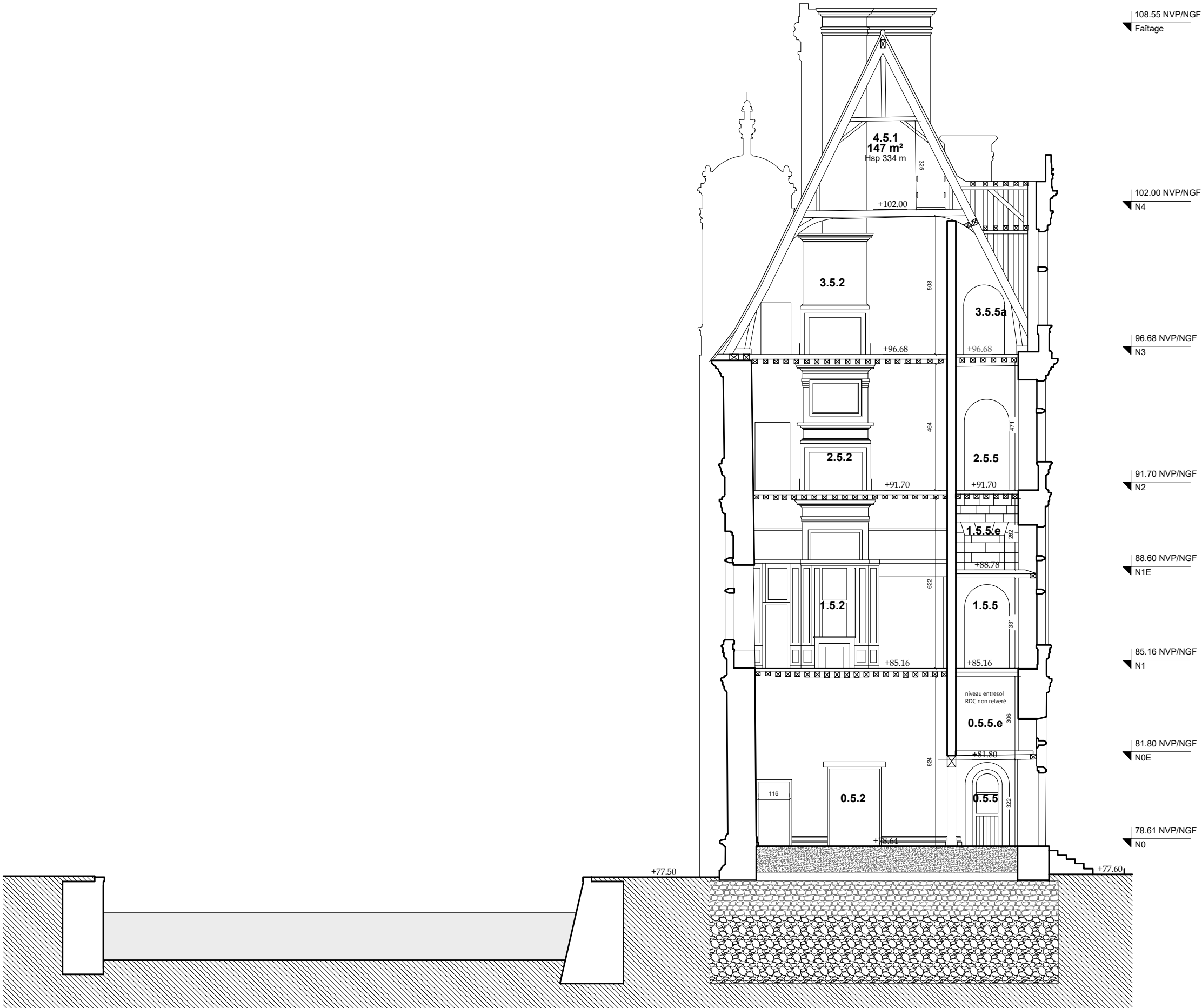


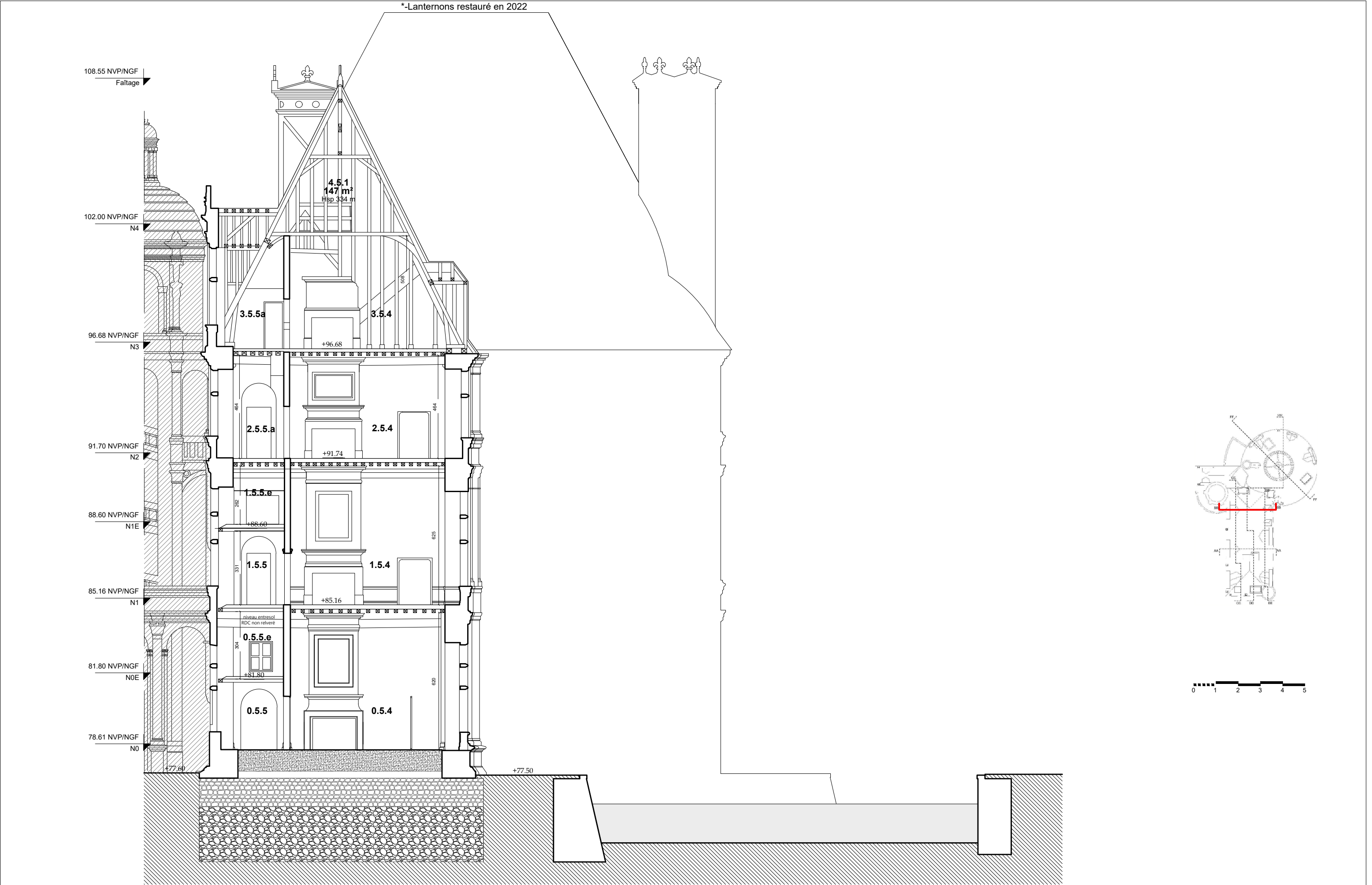
Aile François 1er
FEE

Tour R. de Parme
T6









108.55 NVP/NGF
Faltage

102.00 NVP/NGF
N4

96.68 NVP/NGF
N3

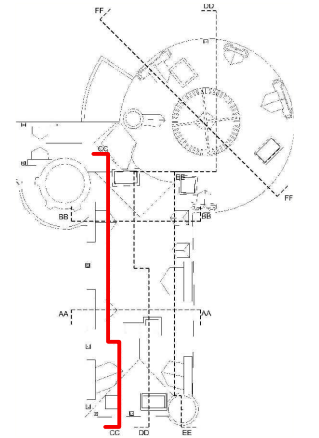
91.70 NVP/NGF
N2

88.60 NVP/NGF
N1E

85.16 NVP/NGF
N1

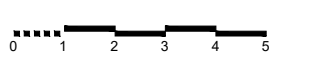
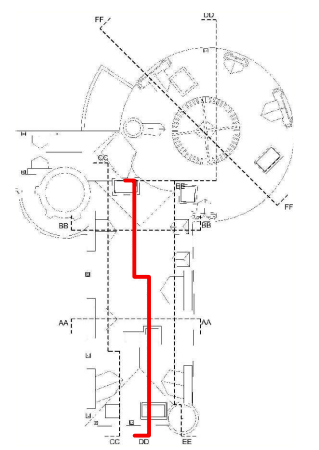
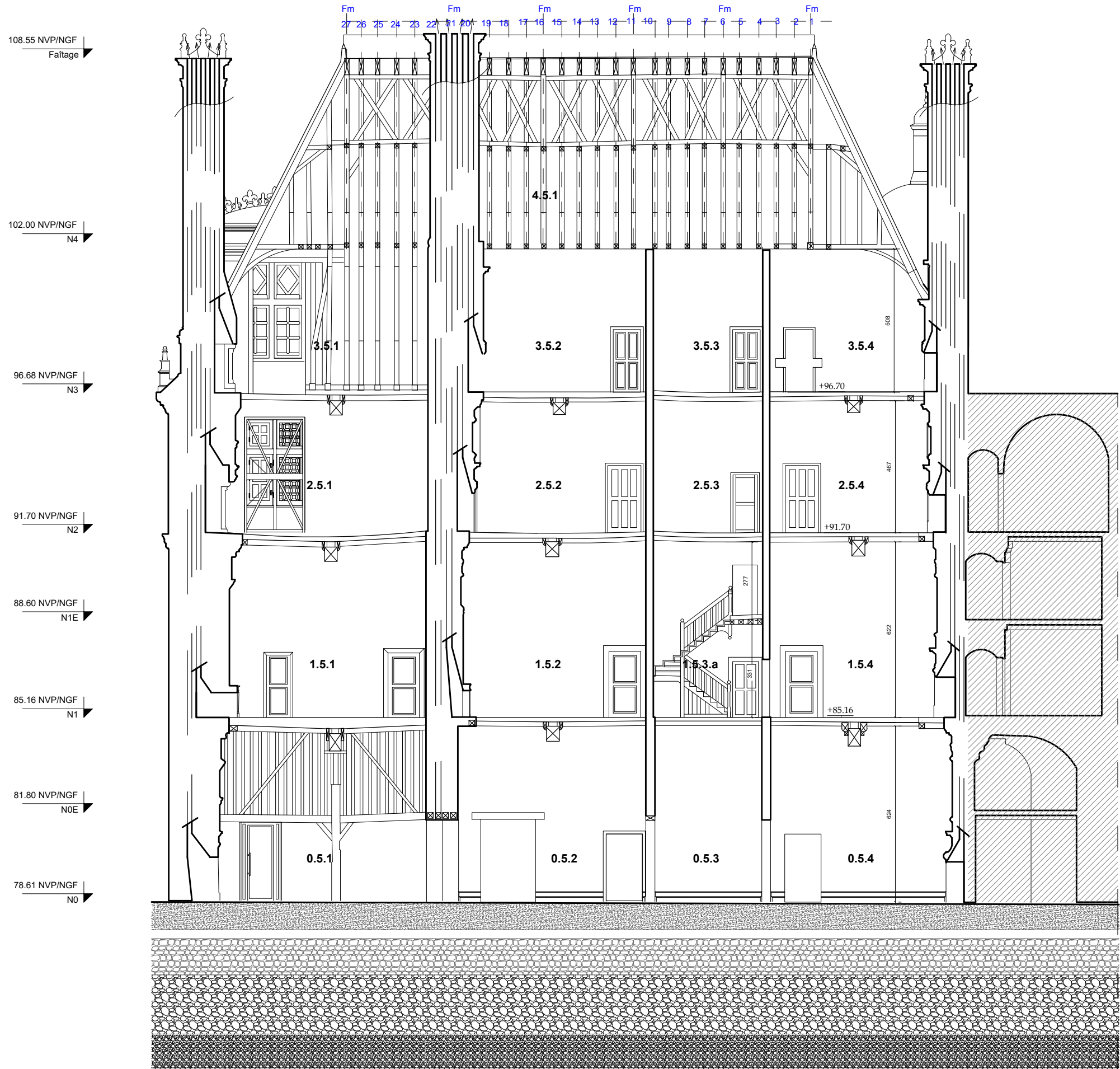
81.80 NVP/NGF
N0E

78.61 NVP/NGF
N0



0 1 2 3 4 5





108.55 NVP/NGF
Faitage

102.00 NVP/NGF
N4

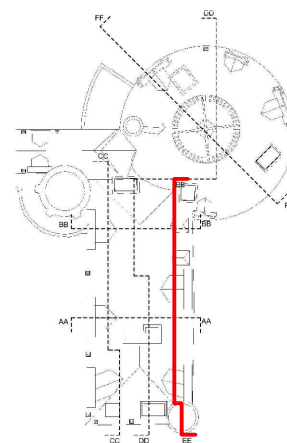
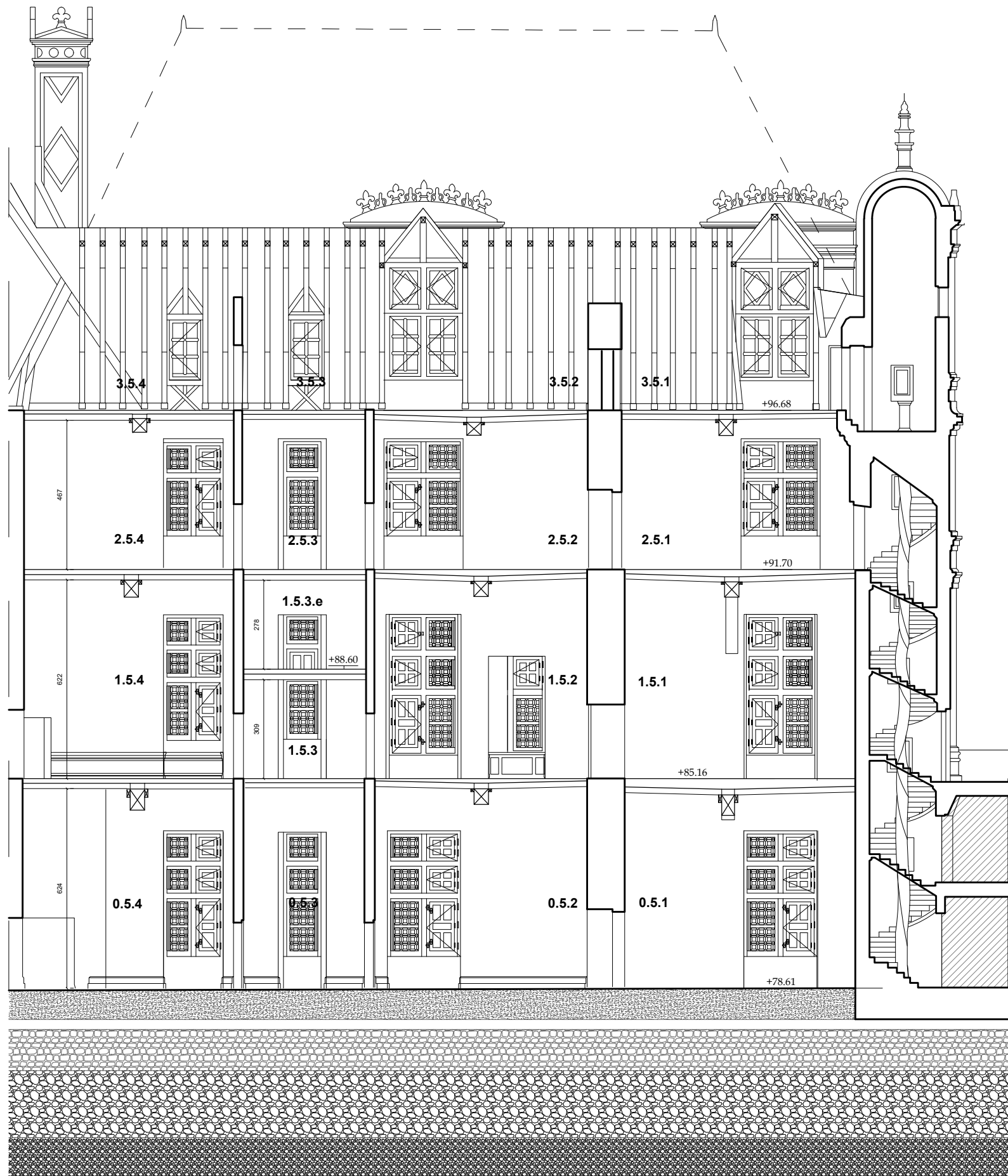
96.68 NVP/NGF
N3

91.70 NVP/NGF
N2

88.60 NVP/NGF
N1E

85.16 NVP/NGF
N1

78.61 NVP/NGF
N0



0 1 2 3 4 5





